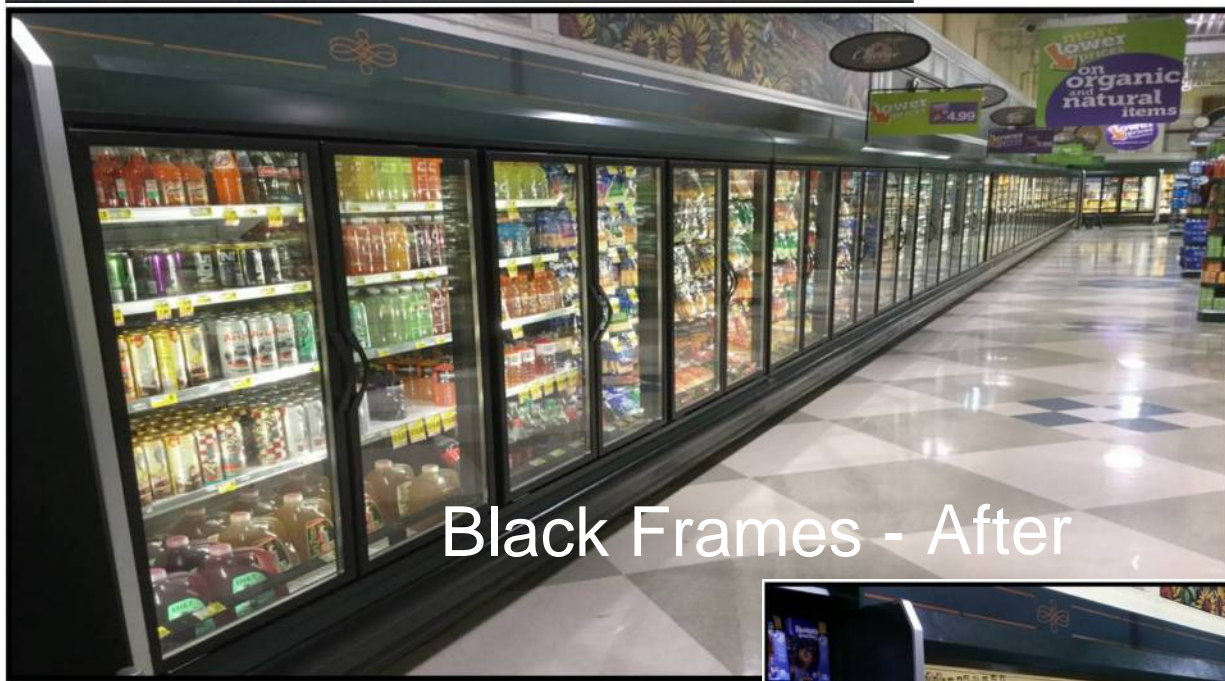


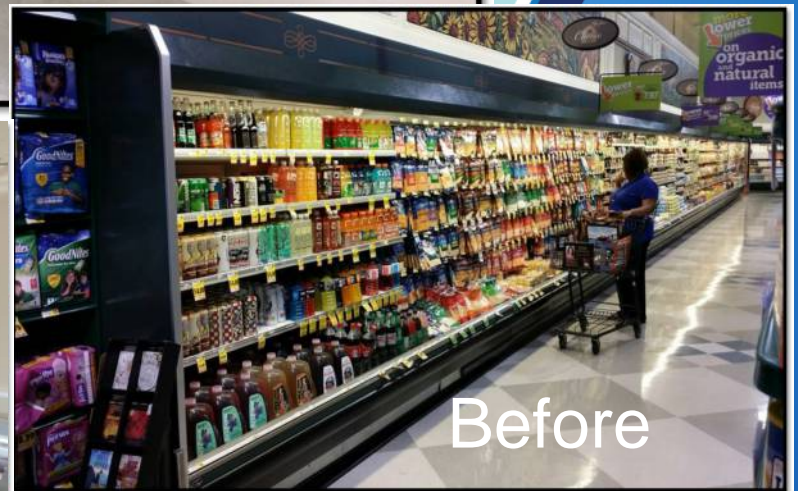
FRESH // LINE™



Black Frames - After



Silver Frames - After



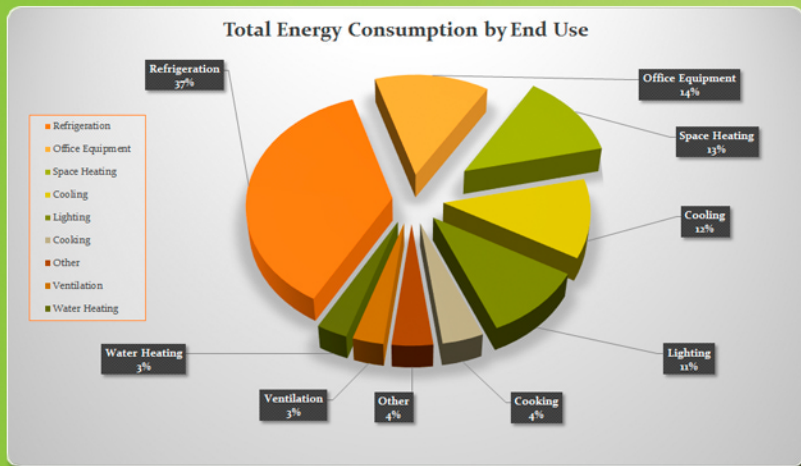
Before

- ✓ MOST HINGE BEARING SURFACE IN THE INDUSTRY.
- ✓ TORQUE ROD FOR SMOOTH, CONSISTENT DOOR CLOSE.
- ✓ NARROW FLANGE ALLOWS FOR LARGE VIEWING AREA WITHOUT SACRIFICING STRENGTH.
- ✓ HELIARC WELDED CORNERS PROVIDE SUPERIOR STRENGTH.
- ✓ MULLION-LESS DESIGN FOR FULL DUAL DOOR ACCESS.
- ✓ HOLD OPEN DESIGN CAN NOT BE ACCIDENTLY ENGAGED BY SHOPPERS.
- ✓ SATIN BLACK & SILVER ANODIZED FINISH WILL NOT DISCOLOR.
- ✓ INTEGRATED CORNER KEYS INSURING TIGHT MITERS.
- ✓ HIGH PERFORMANCE INSULATING GLASS UNIT PROVIDES 65% RH PROTECTION.
- ✓ FRAME DESIGN PROMOTES CONTINUOUS LINE-UP APPEARANCE.
- ✓ WARRANTY 20-YEAR GLASS PACK SEAL & 2-YEAR MATERIALS & WORKMANSHIP.





RETROFIT COMPARISON



➔ **65% SAVINGS** CLOSED REACH-IN CASES

➔ **75% SAVINGS** CLOSED REACH-IN CASES WITH LED PACKAGE

ENERGY SAVINGS

UP TO 65% ENERGY SAVINGS WITH FRESH//LINE DOORS.
UP TO 75% ENERGY SAVINGS WITH FRESH//LINE DOORS AND LED LIGHTING PACKAGE.